

ASHTON
WORTHINGTON PEOPLE
FLY ON THE WALL













SEEK TRUTH















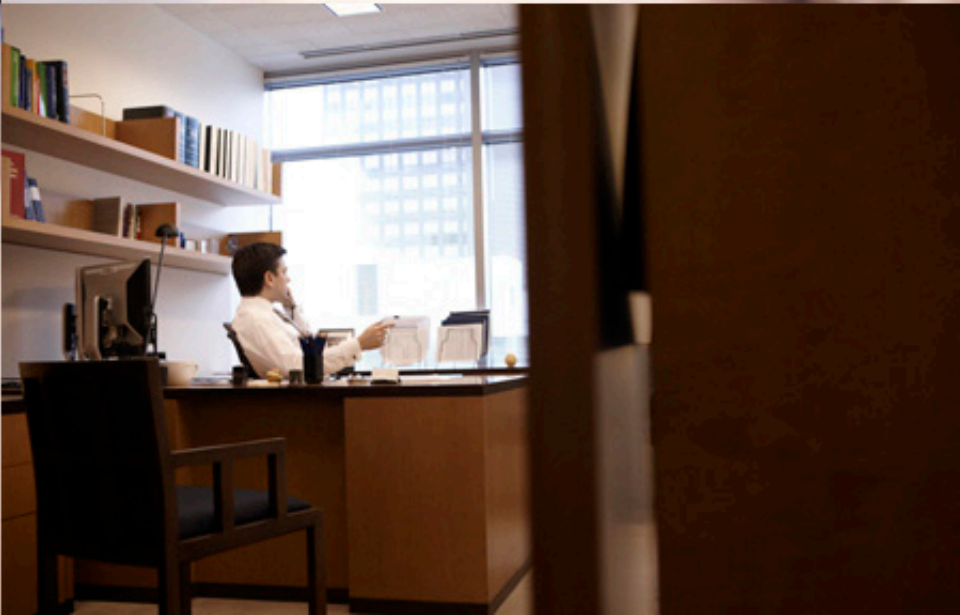




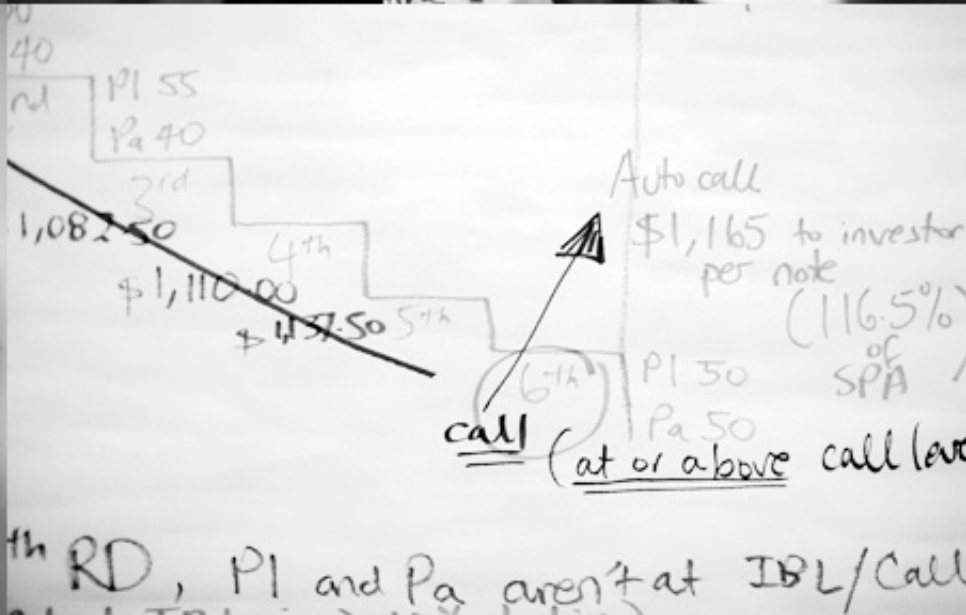














Jonathan D. Newkirk
212 450 4502 ext
212 751 5062 fax
jnewkirk@law.davispolk.com

Davis Polk & Wardwell LLP
410 Lexington Avenue
New York, NY 10017

Davis Polk

















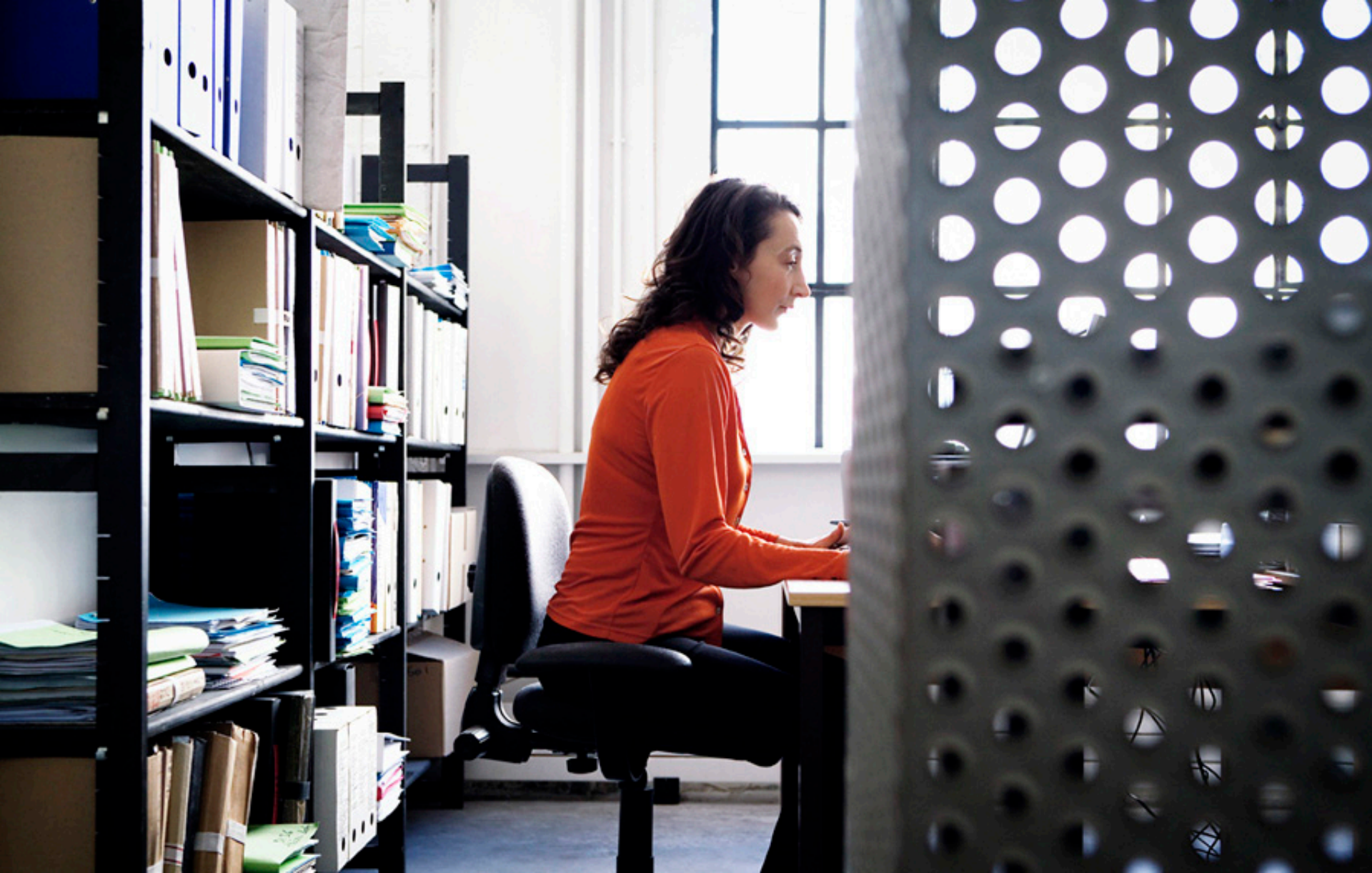






































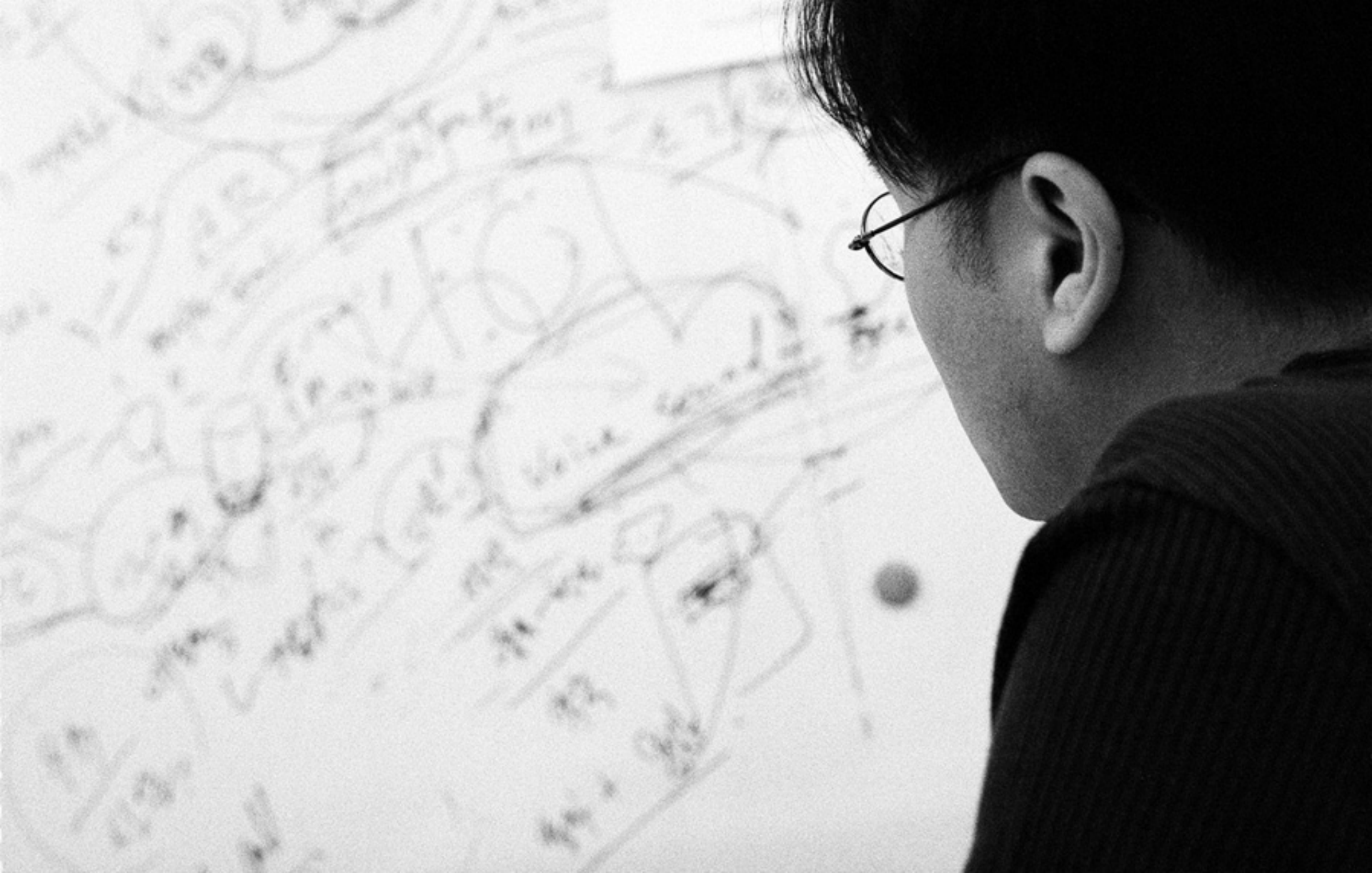


A black and white photograph of a blurred office interior. In the center, a dark oval contains the word "SAMSUNG" in white, bold, sans-serif capital letters. The background shows a long office hallway with cubicles on both sides. Two people are walking away from the camera in the distance. The ceiling has recessed lighting, and the overall scene is out of focus, suggesting a candid or documentary-style shot.

SAMSUNG













THANK YOU

ASHTON WORTHINGTON PHOTOGRAPHY

**ASHTONOGRAPHY.COM
STUDIO@ASHTONOGRAPHY.COM
347.763.2210**

**REPRESENTED BY K2 CREATIVE MANAGEMENT
K2CREATIVEMANAGEMENT.COM
INFO@K2CREATIVEMANAGEMENT.COM
646.355.4198**